

# H89 Trailer

LONG TREAD LIFE TIRE FOR LONG-HAUL AND REGIONAL

## INNOVATIVE TECHNOLOGY FOR YOUR BUSINESS



MILEAGE



WET HANDLING



FUEL EFFICIENT



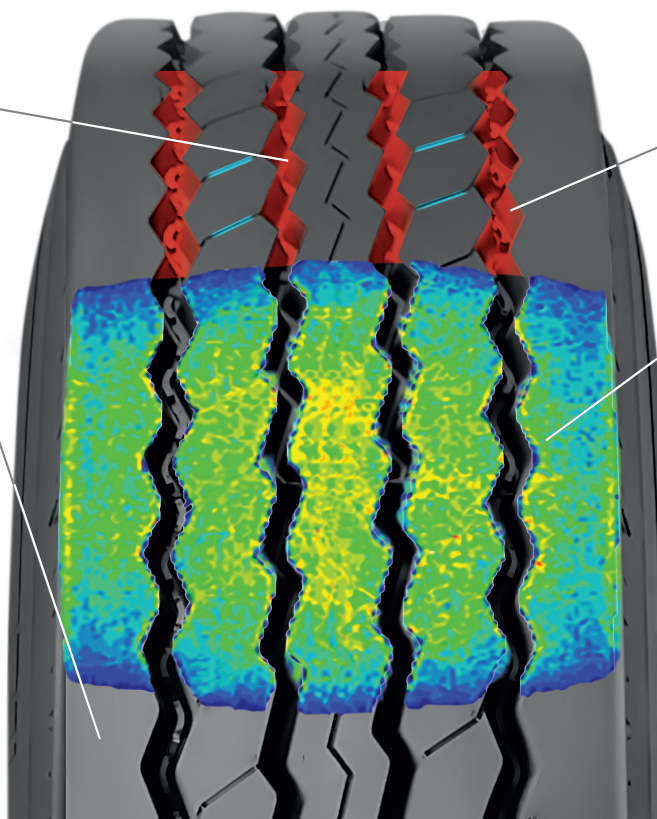
## PREMIUM PERFORMANCE

### LATERAL STABILITY

Granted by the tire tread pattern design with **4 wide longitudinal grooves** combined with a **special compound**.

### GRIP ON SLIPPERY SURFACE

**Grip performance** is ensured by an **innovative compound**. M+S performance provided by tread pattern design with **zig-zag grooves**.



### LONG TREAD LIFE

Enhanced by **stone ejectors technology** present in the lateral grooves.

### HIGH MILEAGE AND DURABILITY

Thanks to a special tread compound designed to work under the severe conditions of **high scrub on spread axle** service in regional and long haul application.



# TECHNOLOGICAL FEATURES



## DLTC

### DUAL LAYER TREAD COMPOUND

#### High Silica Formulation Compound (Pirelli patent)

- Higher Mileage
- Low Rolling Resistance
- Excellent Grip
- Short Braking Distance



## 3SB

#### SATT (Pirelli patent)

### 3 SANDWICH BELTS

- Enhanced Even Wear
- Extended Tire Life
- Great Retreadability
- Handling



## FRC

### FULL RUBBERIZED CORDS

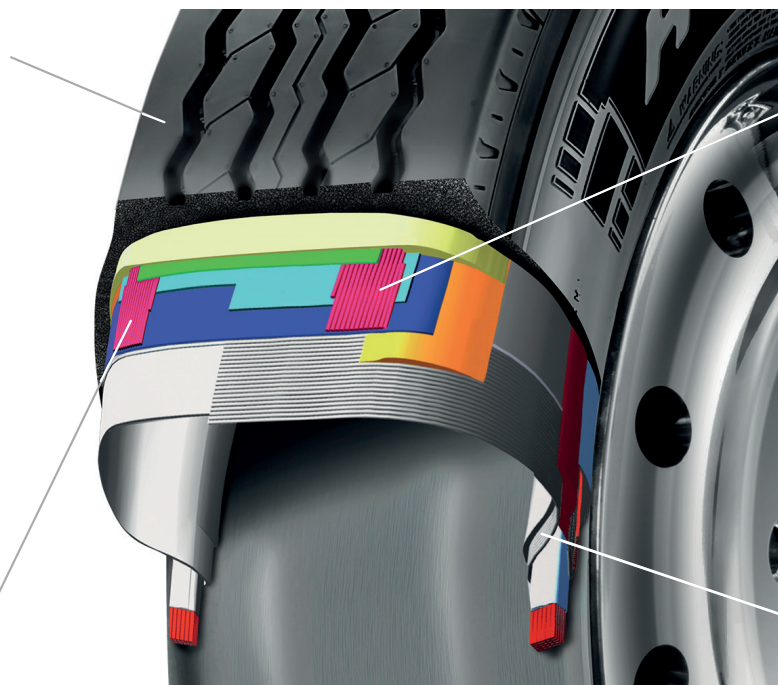
- Great Fatigue Resistance



## BWC

### BEAD WRAPPED CHAFER

- Increased Resistance
- Excellent Retreadability



## AVAILABLE RANGE

Tire Size	Product Number	Load Range Ply Rating	Loaded Radius in. (mm)	Overall Diameter in. (mm)	Overall Width in. (mm)	Approved Rims in.	Minimum Dual Spacing in. (mm)	Revs Per Mile rpm (rpk)	Tread Depth 32nds (mm)	Max Speed mph (kph)	MAX TIRE LOAD		Tire Weight lbs. (kg)	M+S
											Singls lbs. psi (kg kPa)	Dual lbs. psi (kg kPa)		
11R24.5	3150900	H/16	20.2	43.2	11.1	<u>8.25</u> , 7.50	12.5	467	18/32	81	7160/120	6610/120	142	✓
			(514)	(1098)	(283)	-	(318)	(290)	(14)	(130)	(3250/830)	(3000/830)	(64)	
11R22.5	3151000	G/14	19.2	41.4	11.0	<u>8.25</u> , 7.50	12.5	502	18/32	81	6175/105	5840/105	126	✓
			(488.4)	(1052)	(280)	-	(318)	(314)	(14)	(130)	(2800/720)	(2650/720)	(57)	

Note: Rim underlined is measuring rim



## PROMETEON

DISCOVER MORE ON [PROMETEON.COM](http://PROMETEON.COM)

February 2018 edition. Prometeon Tyre Group Commercial Solutions LLC reserves the right to modify the contents of this publication without prior notice.  
Copyright (c) 2018 Prometeon Tyre Group Commercial Solutions LLC The Pirelli logo is a trademark used by Prometeon Tyre Group Commercial Solutions LLC under license.

